

# **Nocturnal activity & arrestment** to host plants by green mirids

19 Nov 2024

Dr Justin Cappadonna





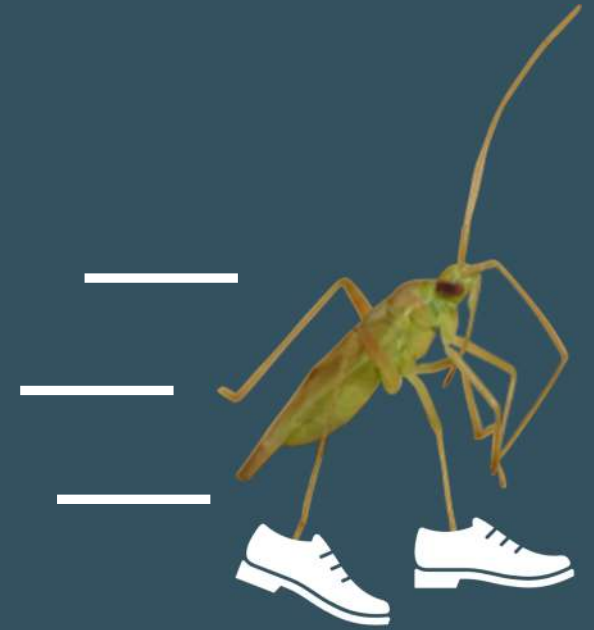
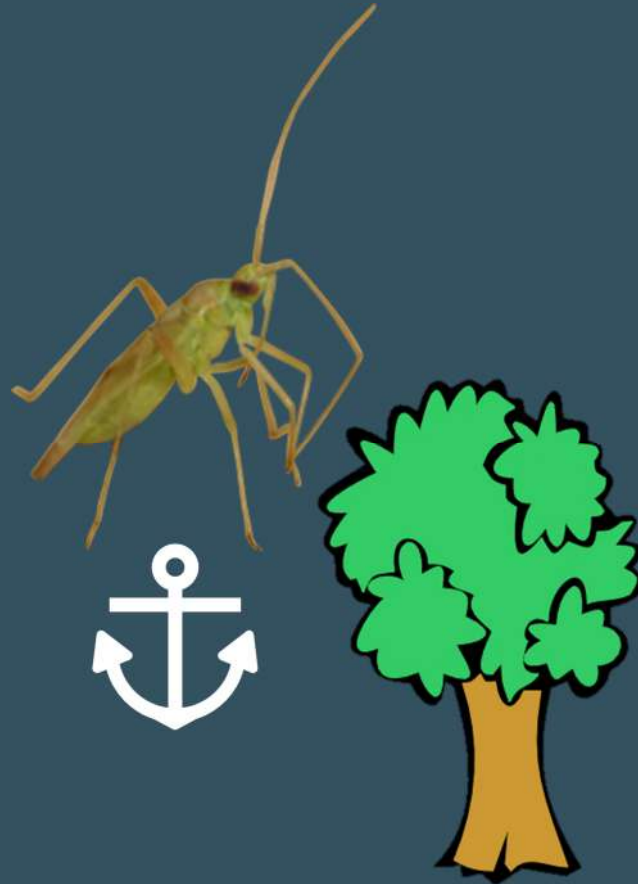


**Cotton**



**Pigeon pea**

# Result Sneak Peak



# Activity Period

- Cotton, pigeon pea, or control
- 10 mirids per cage
- 3pm – 12 am
- Generalized linear mixed model

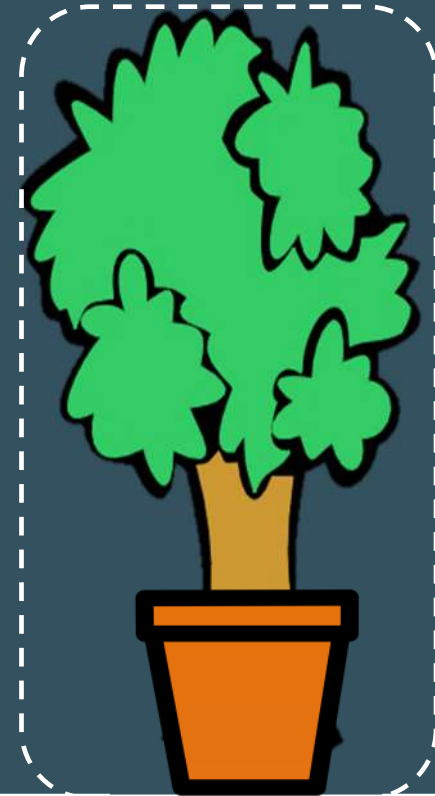
Time

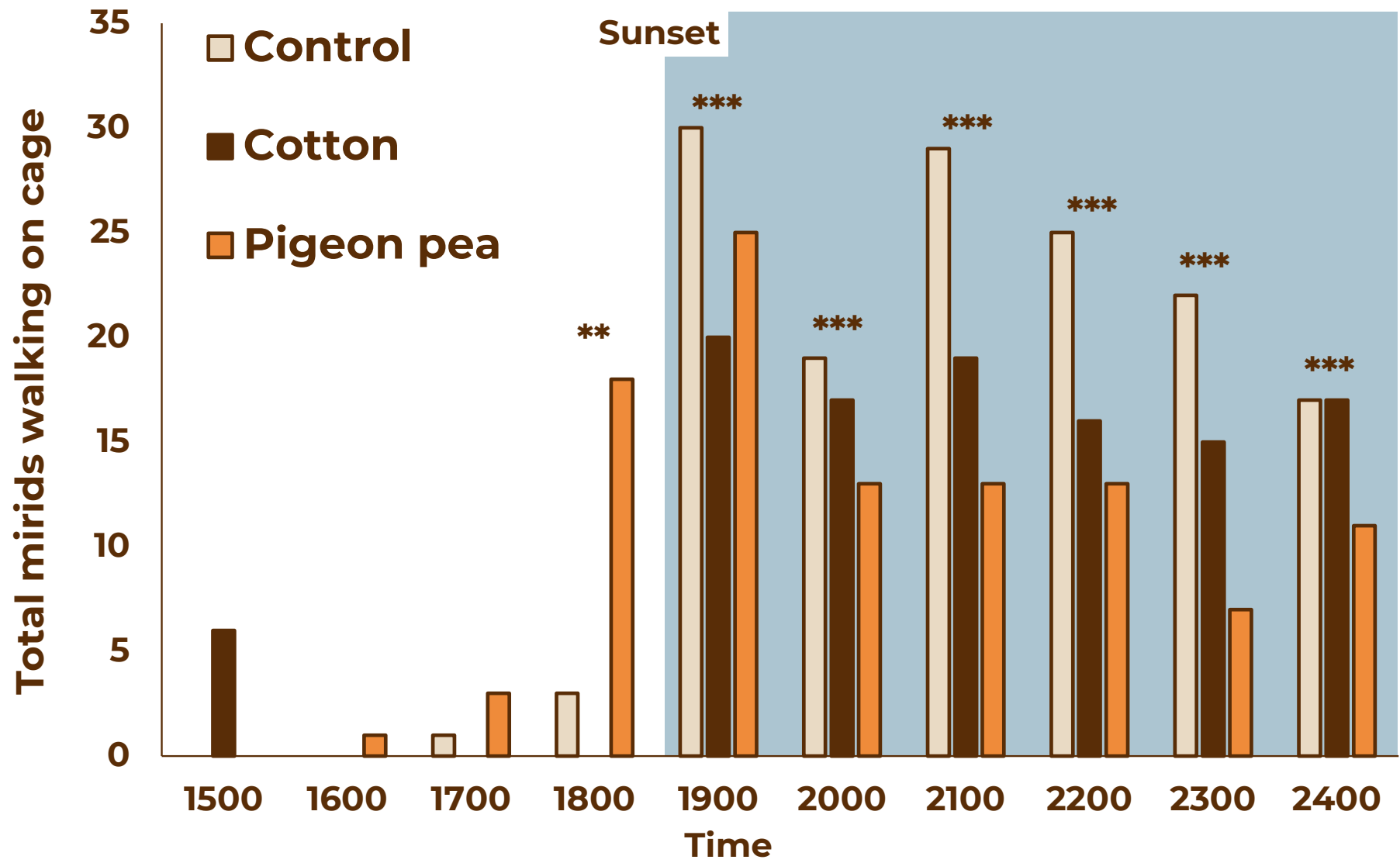
Plant

Cage

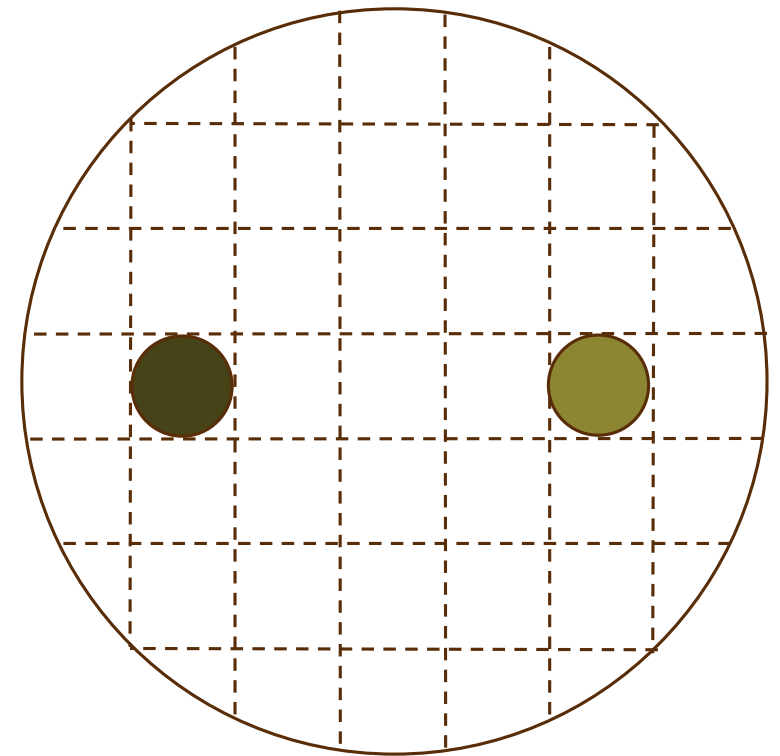
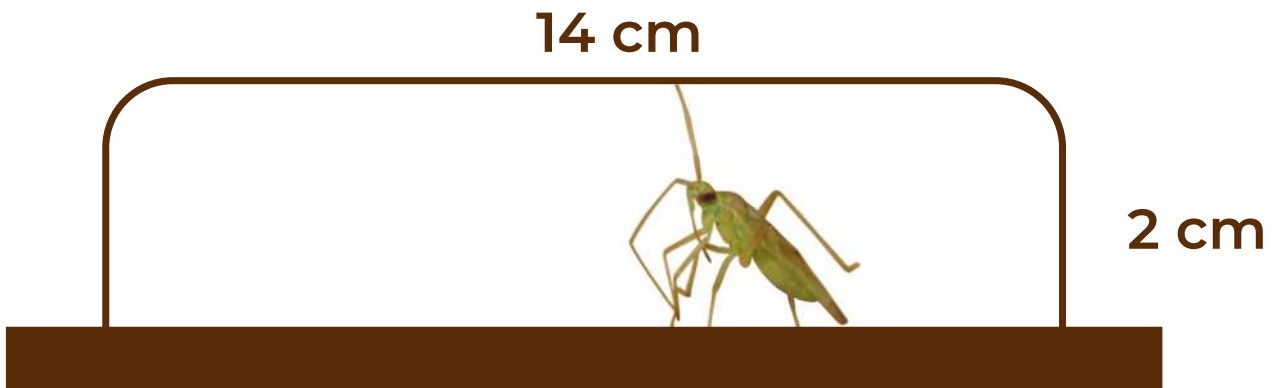
Cage

Mirid Region



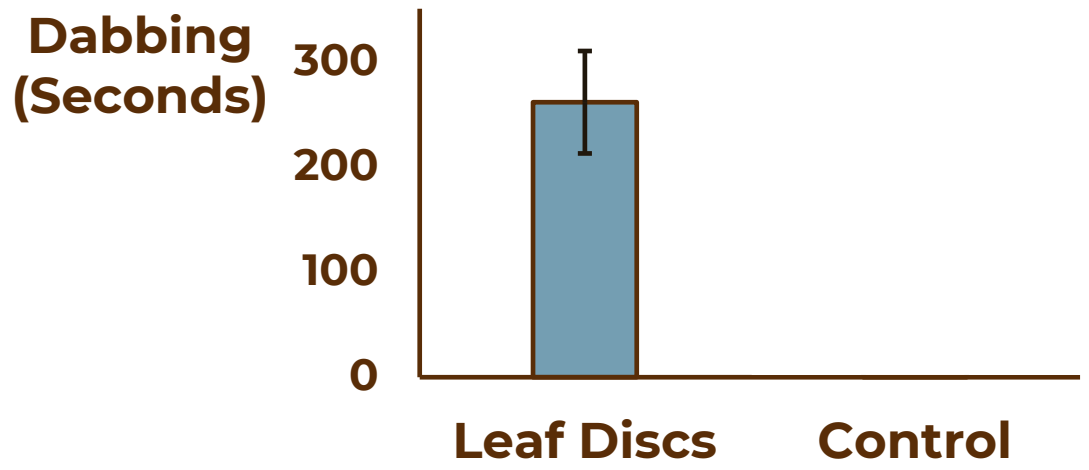
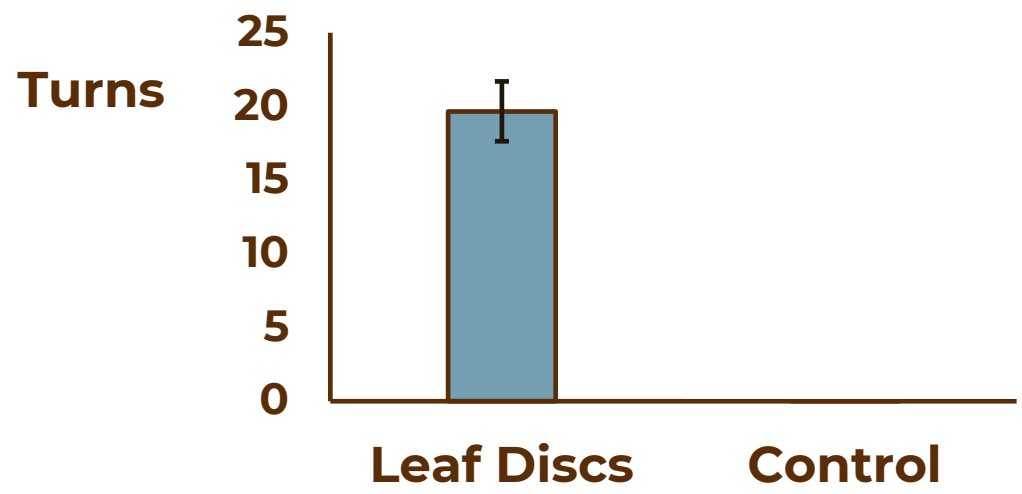
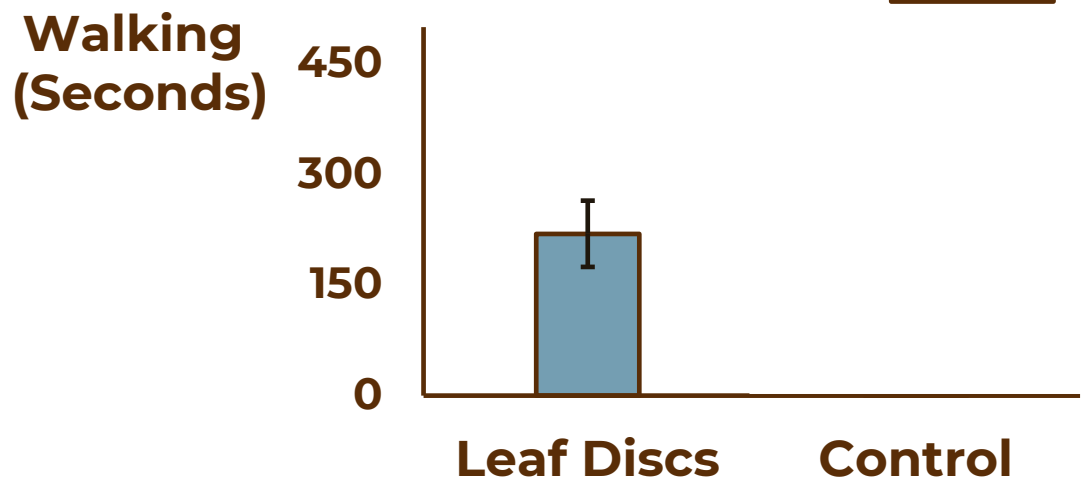
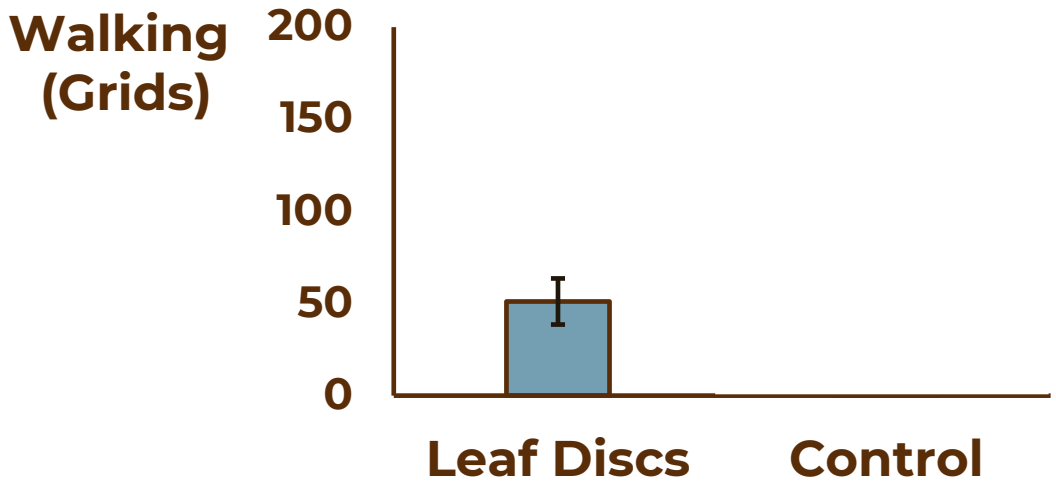


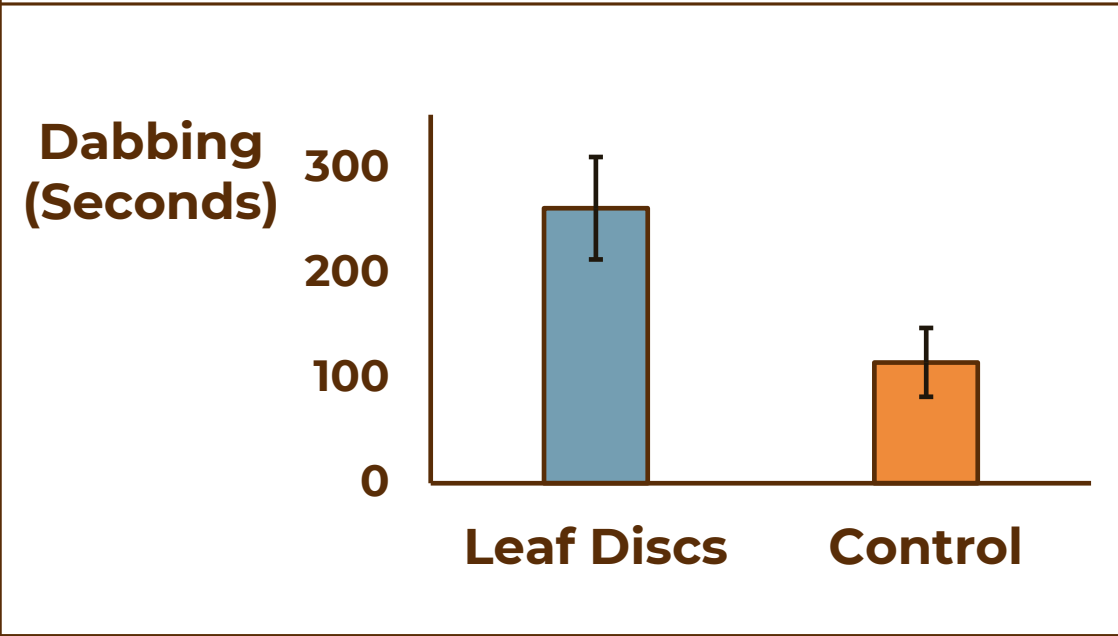
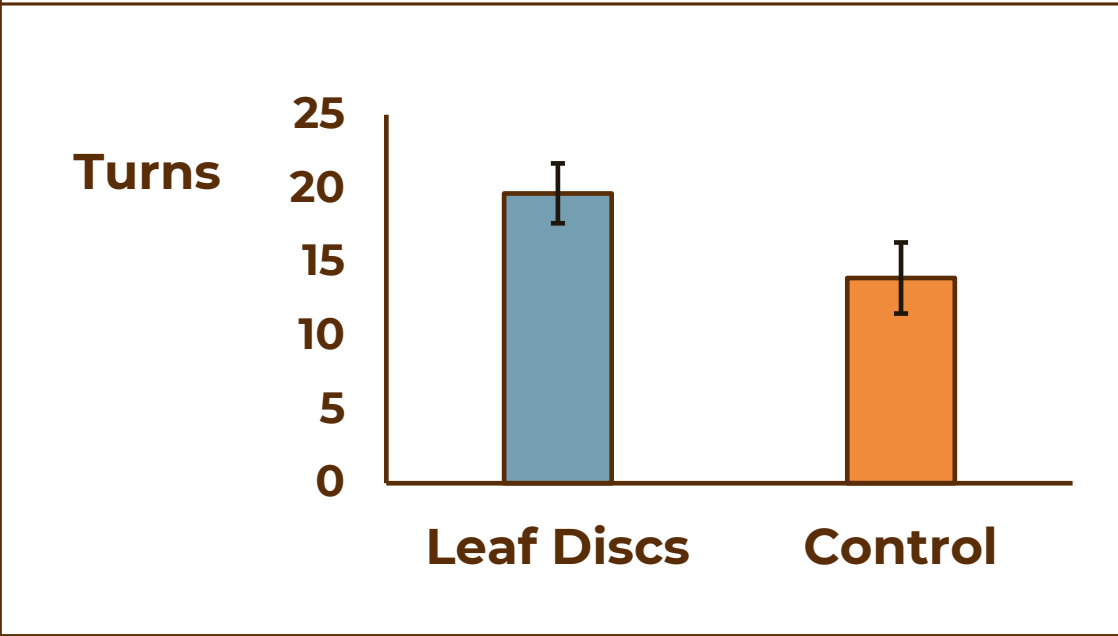
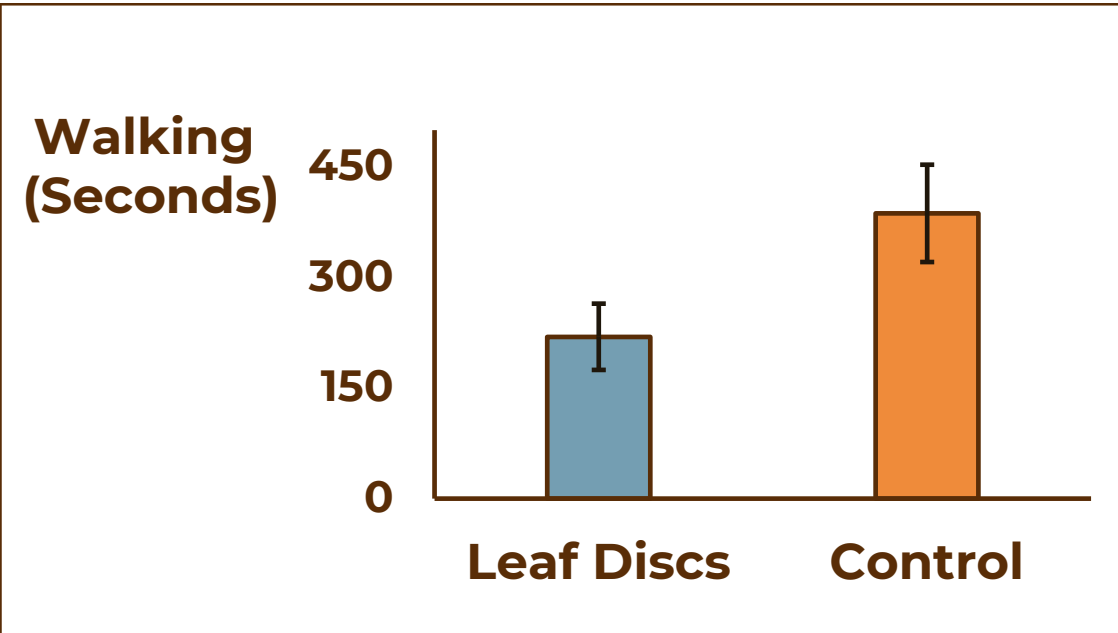
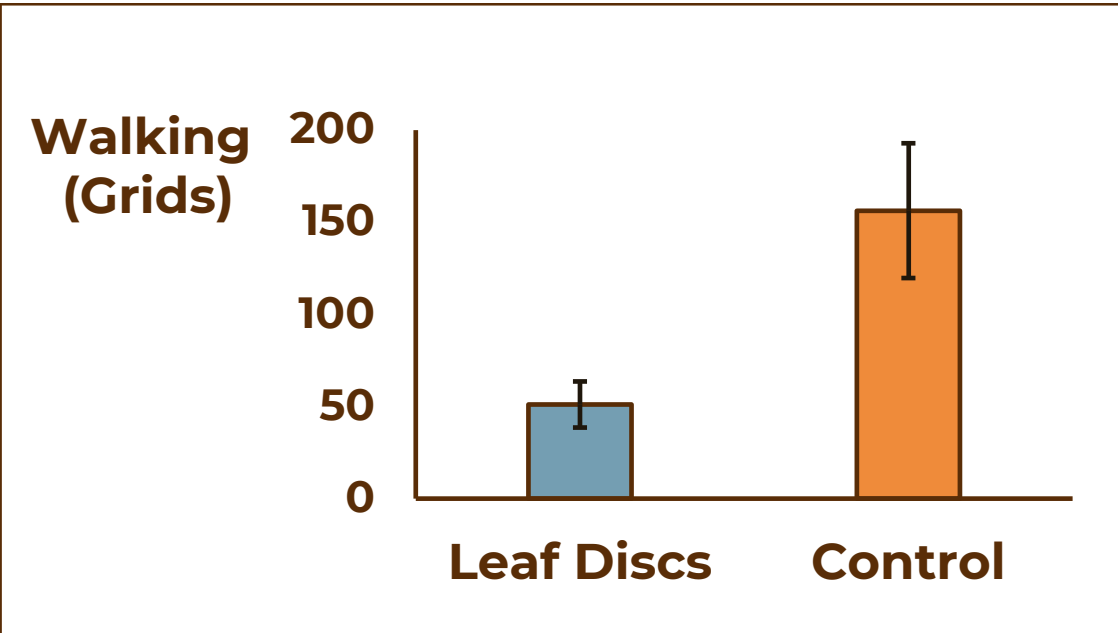
# Petri Dish Experiments





n = 30





# Implications

- Assessing **patterns** of host use is relatively simple.
- Assessment of **behaviours** is not.
- Important to account for **activity periods,**  
& **non-oriented responses.**

# Acknowledgements



